



Government of India
Ministry of Earth Sciences



India Meteorological Department

PRESS RELEASE-4

Time of issue: 1230 hours IST

Dated: 26th May, 2024

Sub: Severe Cyclonic Storm “REMAL” over North Bay of Bengal (Cyclone Warning for West Bengal Coast: Red Message)

Yesterday’s deep depression over eastcentral Bay of Bengal moved nearly north-northeastwards and intensified into a cyclonic storm “REMAL” {pronounced as RE-MAL} over the north and adjoining eastcentral Bay of Bengal in the same evening (1730 hours IST of 25th May, 2024). Thereafter, it moved nearly northwards and intensified further into a severe cyclonic storm over the North Bay of Bengal in the early morning (0530 hours IST) of today the 26th May. Continuing to move further nearly northwards, it lay centered at 0830 hrs IST of today, the 26th May over the same region near latitude 19.8°N and longitude 89.3°E about 260 km south-southwest of Khepupara (Bangladesh), 310 km south of Mongla (Bangladesh), 240 km south-southeast of Sagar Islands (West Bengal) and 280 km south-southeast of Canning (West Bengal). Currently maximum sustained wind speed of 90-100 kmph gusting to 110 kmph prevails around the cyclone centre.

It is very likely to continue to move nearly northwards, intensify further and **cross Bangladesh and adjoining West Bengal coasts between Sagar Island and Khepupara, close to southwest of Mongla (Bangladesh) by midnight of today, the 26th May 2024 as a Severe Cyclonic Storm with maximum sustained wind speed of 110-120 kmph gusting to 135 kmph.**

Forecast track and intensity are given in the following table:

Date/Time (IST)	Position (Lat. °N/ long. °E)	Maximum sustained surface wind speed (Kmph)	Category of cyclonic disturbance
26.05.24/0830	19.8/89.3	90-100 gusting to 110	Severe Cyclonic Storm
26.05.24/1130	20.2/89.2	100-110 gusting to 120	Severe Cyclonic Storm
26.05.24/1730	21.0/89.2	110-120 gusting to 135	Severe Cyclonic Storm
26.05.24/2330	21.8/89.2	110-120 gusting to 135	Severe Cyclonic Storm
27.05.24/0530	22.7/89.5	70-80 gusting to 90	Cyclonic Storm
27.05.24/1730	24.2/90.1	50-60 gusting to 70	Deep Depression
28.05.24/0530	25.5/90.9	30-40 gusting to 50	Depression

Warnings (Graphics Attached):

Heavy Rainfall Warning:

(a) **West Bengal:** Light to moderate rainfall at most places with **heavy to very heavy rainfall** at a few places is likely over coastal districts of West Bengal and eastern districts of Gangetic West Bengal adjacent to Bangladesh on 26th & 27th with isolated **extremely heavy rainfall** (≥ 20 cm) over these districts on 26th May. The peak rainfall activity is likely during noon of 26th to noon of 27th May.

Light to moderate rainfall at most places with **heavy to very heavy rainfall** at isolated places likely over eastern districts of Sub-Himalayan West Bengal on 27th and 28th May.

Contact: Cyclone Warning Division, Office of the Director General of Meteorology, India Meteorological Department, Ministry of Earth Sciences.

E-mail: cyclonewarningdivision@gmail.com, Website: rsmcnewdelhi.imd.gov.in

Spatial rainfall distribution: Isolated: <25%, A few: 26-50%, Many: 51-75%, Most: 76-100%

Rainfall amount (mm): Heavy rain: 64.5 – 115.5, Very heavy rain: 115.6 – 204.4, Extremely heavy rain: 204.5 or more.

(b) **Odisha:** Light to moderate rainfall at most places with isolated **heavy rainfall** likely over North Coastal Odisha on 26th May.

(c) **Northeastern States:** Light to moderate rainfall at most places with **heavy to very heavy rainfall** at isolated places is likely over Mizoram, Tripura and South Manipur on 26th and over Assam, Meghalaya, Arunachal Pradesh, Nagaland, Mizoram, Manipur & Tripura on 27th & 28th May. Isolated **extremely heavy rainfall** (≥ 20 cm) is also likely over Assam, Meghalaya on 27th & 28th May, Arunachal Pradesh on 28th May and Mizoram & Tripura on 27th May.

Wind Warning:

(a) Bay of Bengal:

❖ **Gale wind speed reaching 80-90 kmph gusting to 100 kmph** is likely to prevail over central Bay of Bengal till noon and decrease becoming Squally wind speed reaching 50-60 kmph gusting to 70 kmph till morning of 27th May.

❖ **Gale wind speed reaching 90-100 kmph gusting to 110 kmph** prevailing over North Bay of Bengal is likely to increase becoming **100-120 kmph gusting to 135 kmph** from noon till midnight of 26th May. It is likely decrease thereafter becoming 70-80 kmph gusting to 90 kmph by morning on 27th May and squally wind speed reaching 45-55 kmph gusting to 65 kmph by evening of 27th May.

(b) Along & off Bangladesh and West Bengal coasts:

❖ **Squally wind speed reaching 50-60 kmph gusting to 70 kmph** is prevailing along & off Bangladesh and West Bengal & adjoining North Odisha coasts. It is likely to increase becoming **gale wind speed reaching 70-80 kmph gusting to 90 kmph** from afternoon of 26th May and **100-120 kmph gusting to 135 kmph** along & off Bangladesh and adjoining West Bengal coasts from evening of 26th May till early morning of 27th May. It is likely decrease thereafter to become 60-70 kmph gusting to 80 kmph by afternoon and squally wind 50-60 kmph gusting to 70 kmph by night of 27th May.

❖ **Squally wind speed reaching 45-55 kmph gusting to 65 kmph** is likely to commence over Howrah, Hoogly, Kolkata and East Medinipur districts from evening of 26th May. It will increase gradually becoming **Gale wind speed reaching 70-80 kmph gusting to 90 kmph** over these districts during night of 26th May except East Medinipur where the wind speed may reach up to **60-70 kmph gusting to 80 kmph** during the same period.

(c) Along & off North Odisha coasts:

Squally wind speed reaching 50-60 kmph gusting to 70 kmph is likely to prevail till 27th May morning.

(d) Northeastern States:

Squally wind speed reaching 50-60 kmph gusting to 70 kmph is likely over Mizoram Tripura & south Manipur on 26th & 27th May and **40-50 kmph gusting to 60 kmph** is likely over South Assam and Meghalaya on 27th May.

Storm surge warning:

Storm surge of about 1 meter height above astronomical tide is likely to inundate low lying areas of coastal West Bengal and 3-4 m above astronomical tide likely to inundate low lying areas of coastal Bangladesh around the time of landfall.

Sea condition warning:

(a) Central and North Bay of Bengal:

Very rough to high sea condition is likely to prevail over central Bay of Bengal on 26th May and High to Very High over North Bay of Bengal till 27th May morning.

(b) Along & off Bangladesh and West Bengal coasts

Very rough sea condition is prevailing along & off Bangladesh and West Bengal coasts. It would become high to very high along & off Bangladesh and West Bengal coasts from 26th morning onwards till 27th May morning.

(c) Along & off North Odisha coast:

Very rough sea condition is likely along & off North Odisha coast till 27th May morning.

Damage Expected over South & North 24 Parganas, Howrah, Hoogly, Kolkata & adjoining East Medinipur districts of west Bengal:

- Major damage to thatched houses/ huts. Possibilities of damage to vulnerable structure.
- Unattached metal sheets may fly.
- Breaking of tree branches, uprooting of trees. Major damage to banana and papaya trees. Dead limbs may blow off from trees.
- Damage to power and communication lines due to breaking of branches and uprooting of trees.
- Damage to Kutcha and minor damage to Pucca roads due to heavy rain.
- Damage to paddy crops, horticultural crops and orchards.
- Inundation of low-lying areas and localized flooding
- Occasional reduction in visibility due to heavy rainfall.
- Disruption of traffic due to water logging and squally winds

Action Suggested for South & North 24 Parganas, Howrah, Hoogly, Kolkata & adjoining East Medinipur districts of West Bengal:

- Total suspension of fishing operations.
- Surface transport and shipping operations need to be regulated
- Onshore & Offshore operation need to be regulated as per guidelines
- Coastal hutment dwellers to move to safer places.
- People in affected areas to remain indoors.
- Avoid going to areas that face the water logging problems often.
- Avoid staying in vulnerable structure.

Fishermen Warning (graphics attached):

Fishermen are advised not to venture into central Bay of Bengal till 26th May and North Bay of Bengal till 27th May. Fishermen out at sea are advised to return to the coast.

The system is under continuous surveillance. Next message will be sent at 1430 hrs IST of tomorrow, the 27th May, 2024.

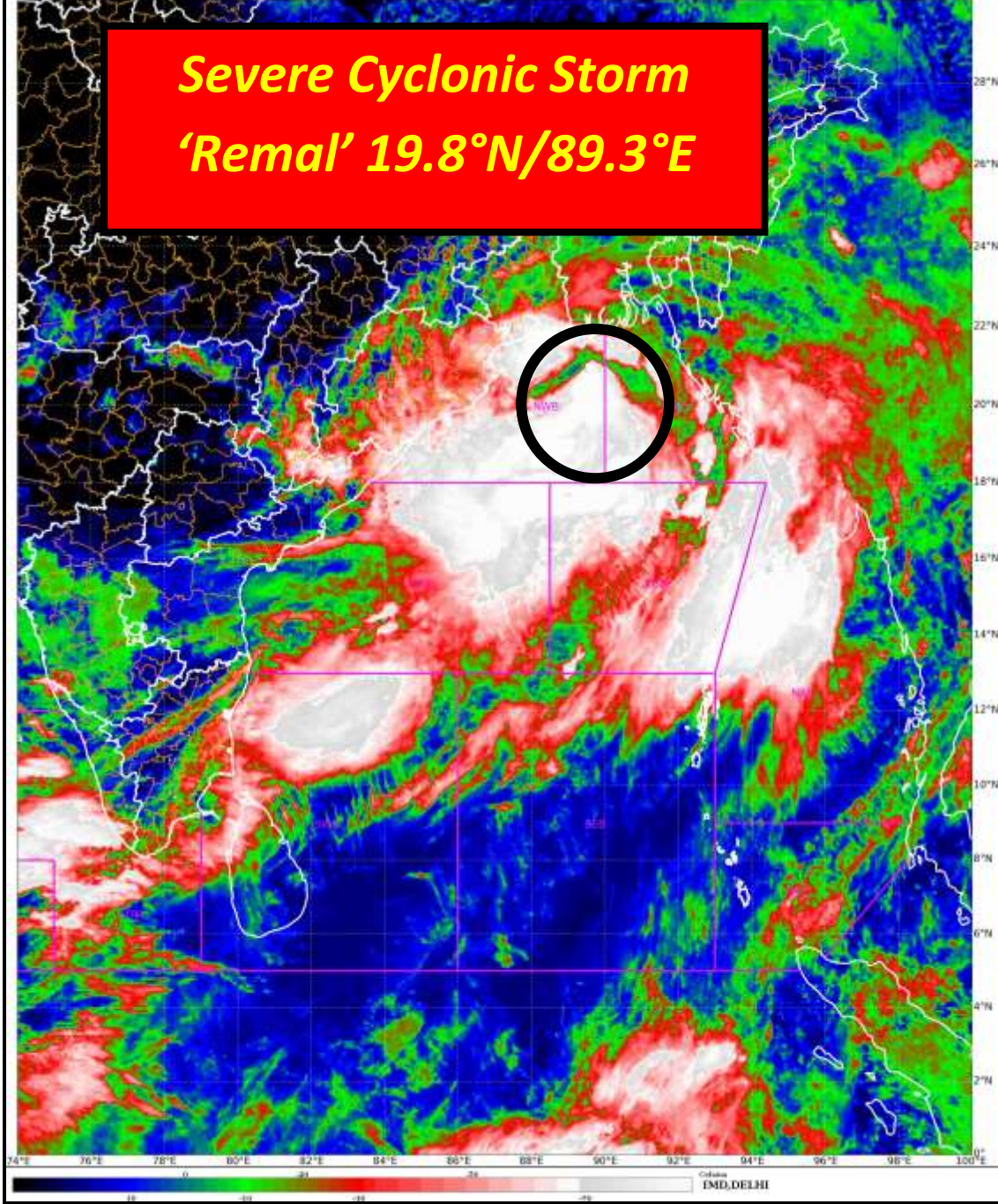
Kindly visit www.rsmcnewdelhi.imd.gov.in and www.mausam.imd.gov.in for updates on the system.

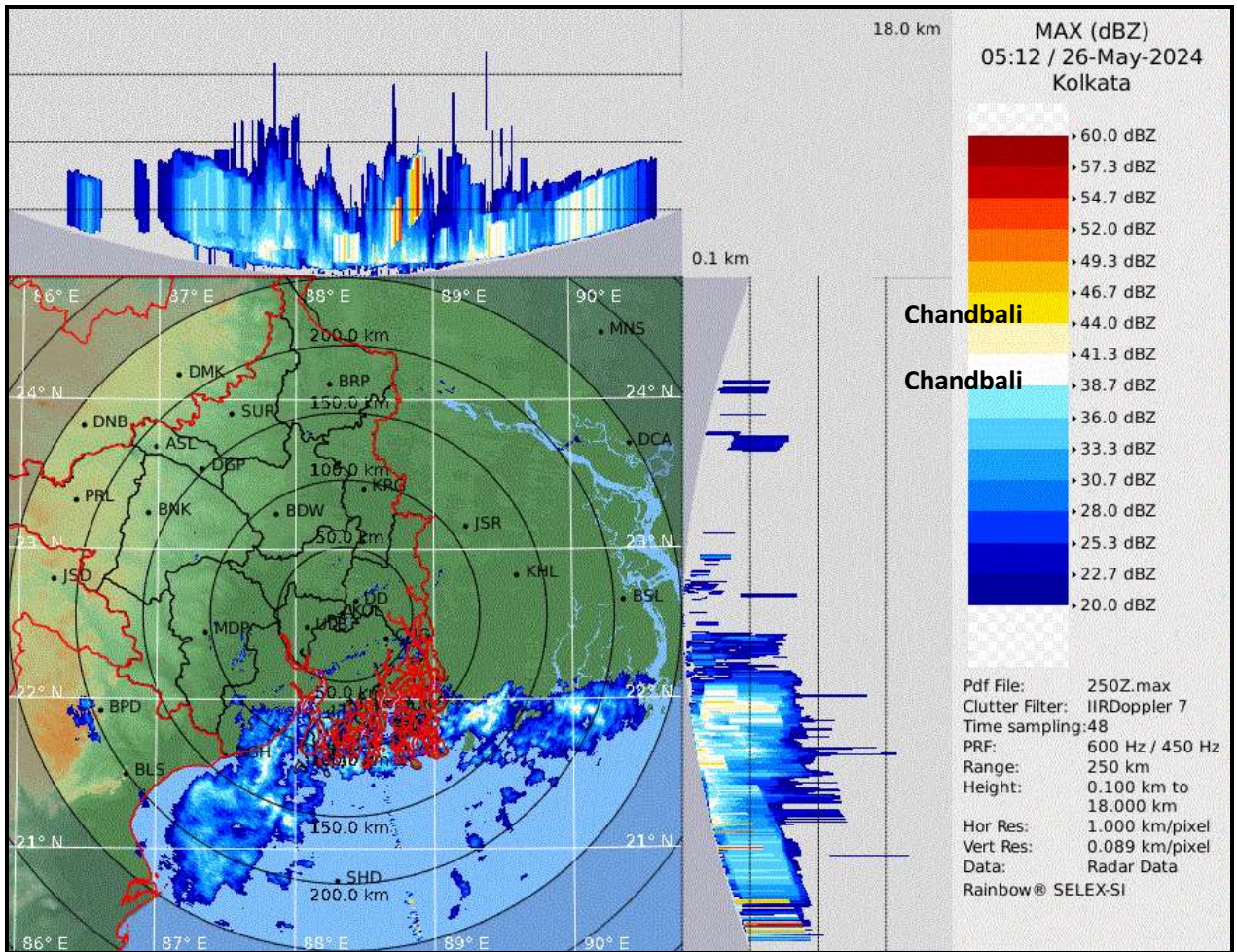
SAT : INSAT-3D IMG
IMG_TIR1_TEMP 10.8 um
LIC Mercator

26-05-2024/(0430 to 0457) GMT
26-05-2024/(1000 to 1027) IST



**Severe Cyclonic Storm
'Remal' 19.8°N/89.3°E**

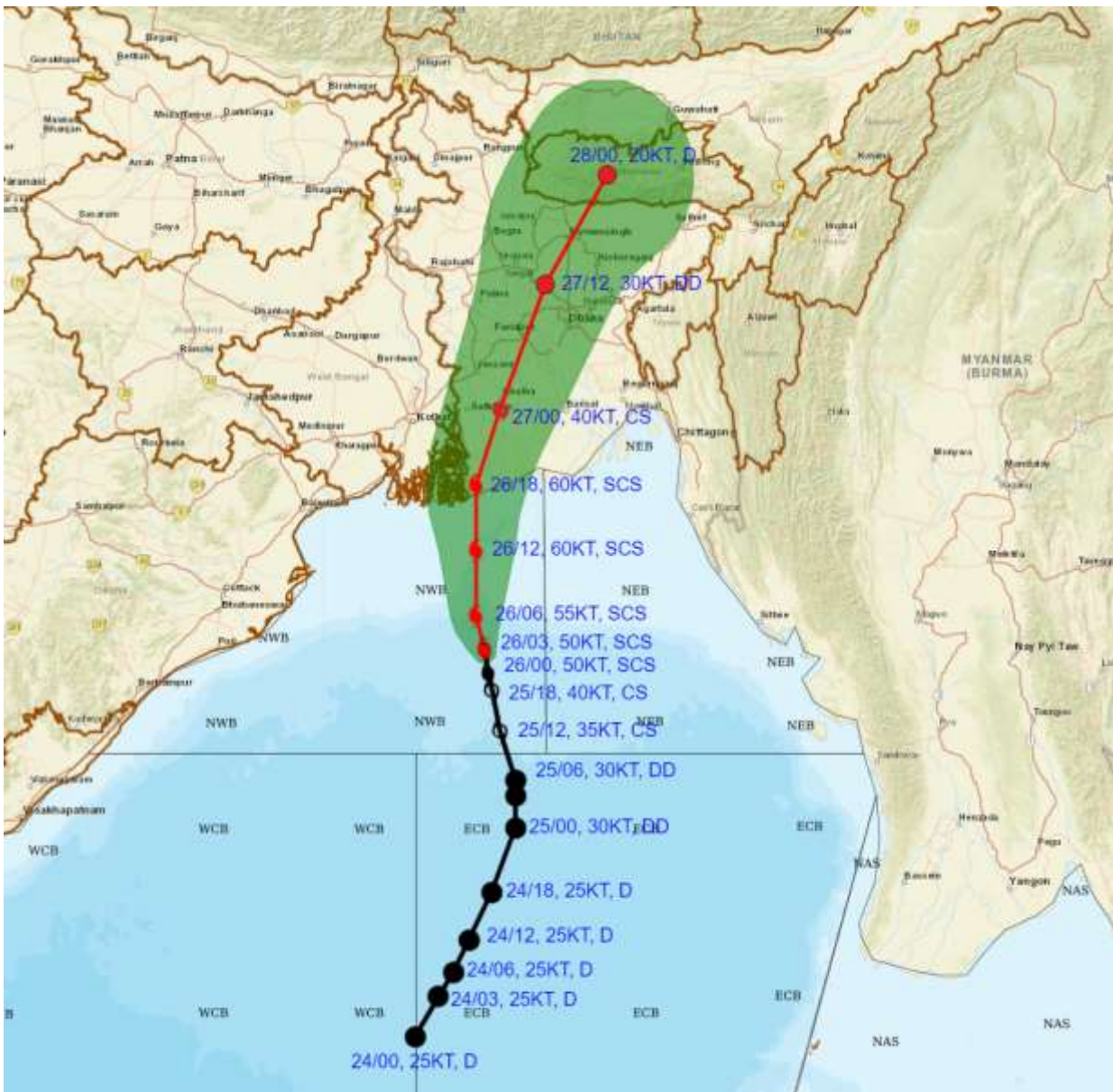




Kolkata Radar



FORECAST TRACK ALONGWITH CONE OF UNCERTAINTY IN ASSOCIATION WITH SEVERE CYCLONIC STORM 'REMAL' OVER NORTH BAY OF BENGAL BASED ON 0300 UTC (0830 IST) OF 26TH MAY 2024.



DATE/TIME IN UTC

IST=UTC + 0530

L: LOW PRESSURE AREA

WML: WELL MARKED LOW PRESSURE AREA

D: DEPRESSION (17-27 KT)

DD: DEEP DEPRESSION (28-33 KT)

CS: CYCLONIC STORM (34-47 KT)

SCS: SEVERE CYCLONIC STORM (48-63KT)

VSCS: VERY SEVERE CYCLONIC STORM (64-89 KT)

ESCS: EXTREMELY SEVERE CYCLONIC STORM (90-119 KT)

SuCS: SUPER CYCLONIC STORM (\geq 120 KT)

● LESS THAN 34 KT

☞ 34-47 KT

☞ \geq 48 KT

— OBSERVED TRACK

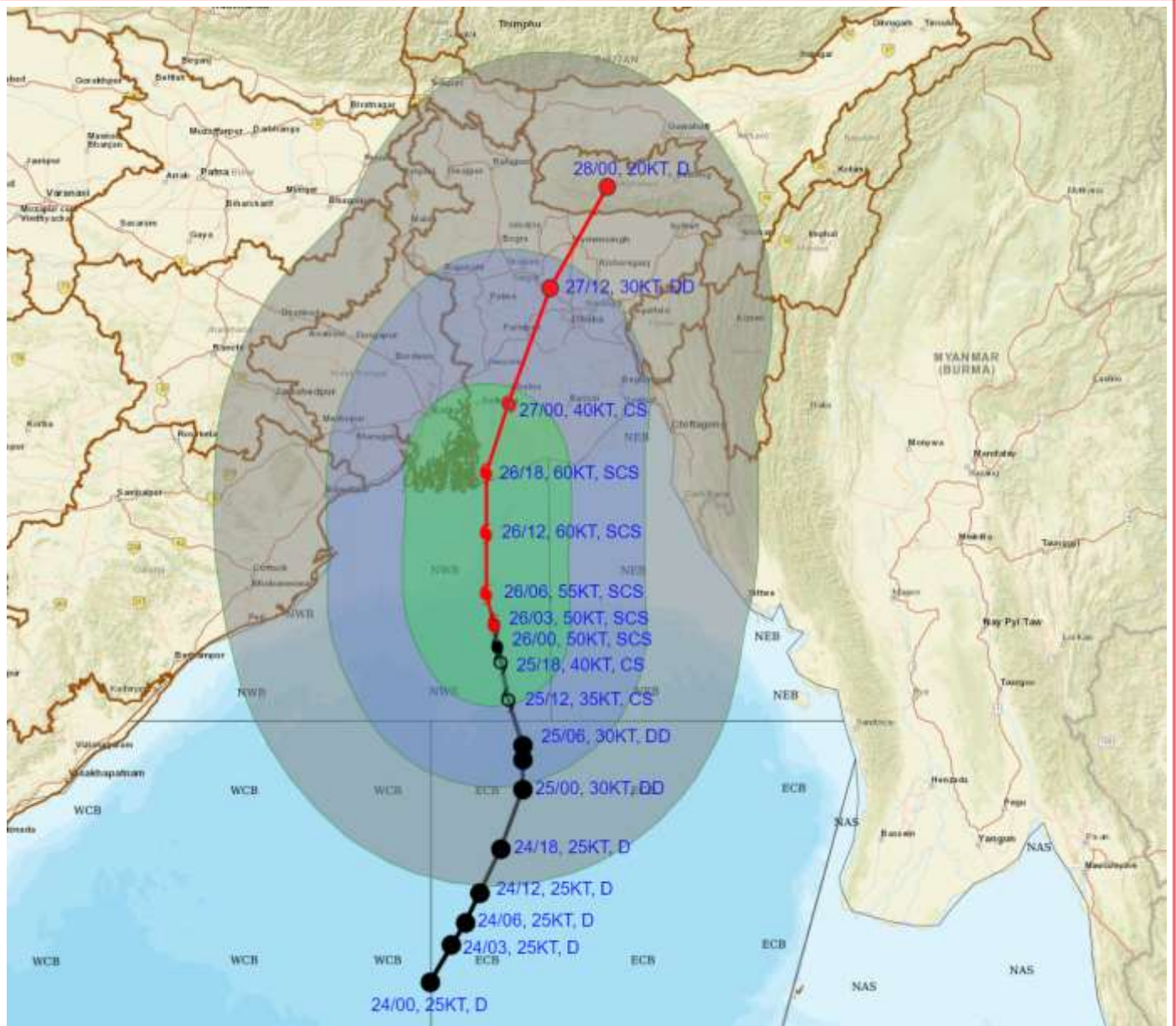
— FORECAST TRACK

▲ CONE OF UNCERTAINTY

Forecast Date and Time (UTC)	DISTANCE (KM) AND DIRECTION FROM STATIONS			
	Canning	Khepupara	SAGAR ISLAND	MONGLA
26.05.24/0300	280, SSE	260, SSW	240, SSE	310, S
26.05.24/0600	240, SSE	220, SSW	200, SE	270, SSW
26.05.24/1200	150, SSE	150, SW	140, ESE	180, SSW
26.05.24/1800	70, SE	100, WSW	110, E	90, SSW



FORECAST TRACK ALONGWITH QUADRANT WIND DISTRIBUTION IN ASSOCIATION WITH SEVERE CYCLONIC STORM 'REMAL' OVER NORTH BAY OF BENGAL BASED ON 0300 UTC (0830 IST) OF 26TH MAY 2024.

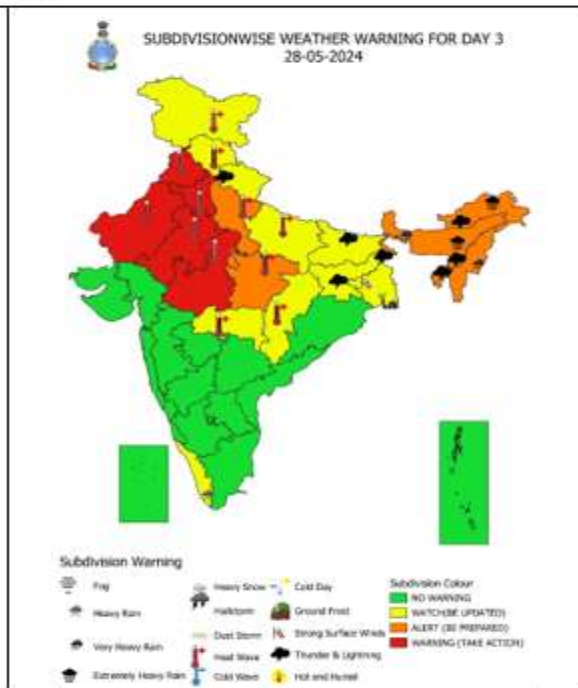
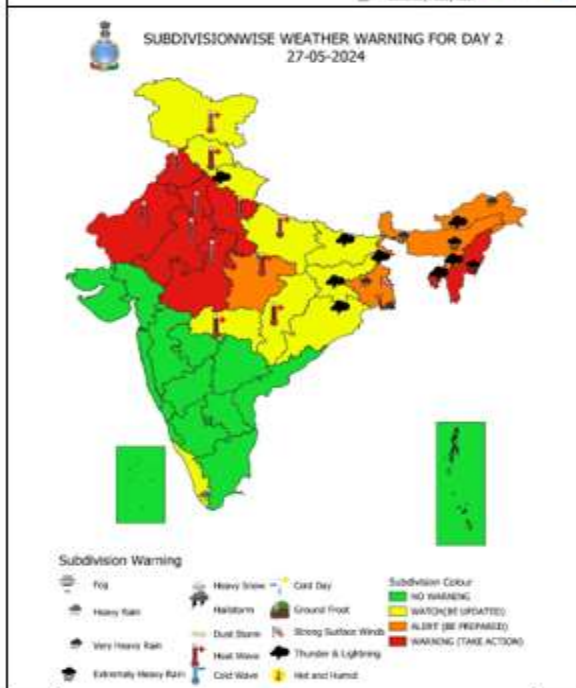
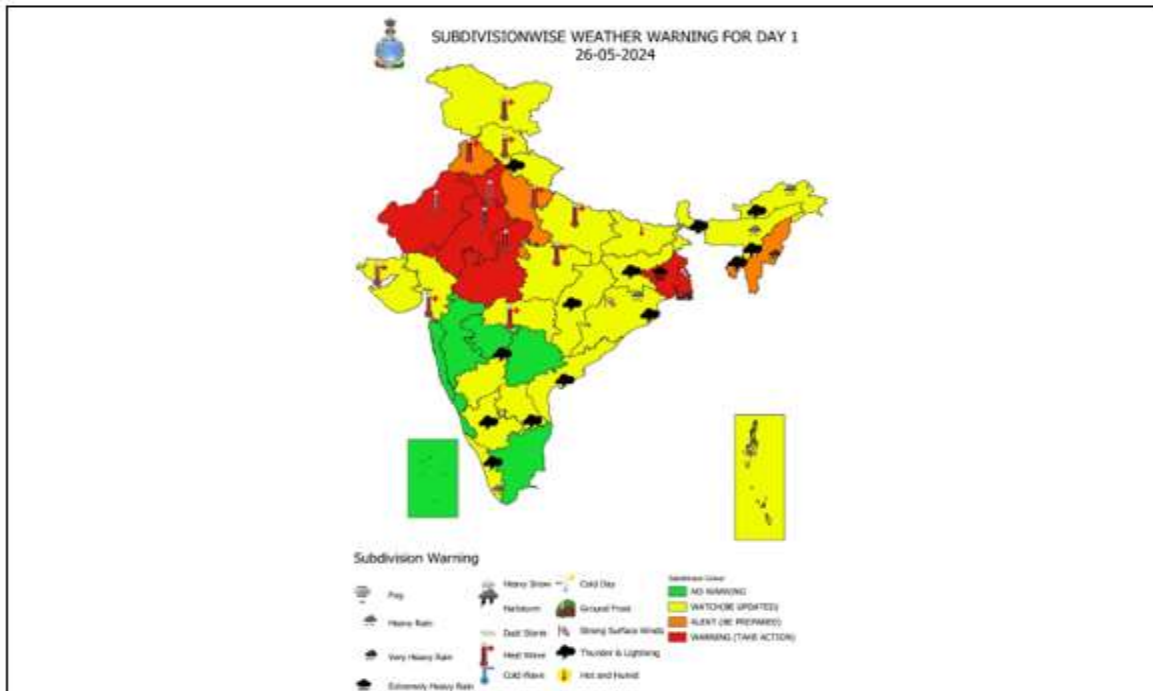


DATE/TIME IN UTC
 IST=UTC + 0530
 L: LOW PRESSURE AREA
 WML: WELL MARKED LOW PRESSURE AREA
 D: DEPRESSION (17-27 KT)
 DD: DEEP DEPRESSION (28-33 KT)
 CS: CYCLONIC STORM (34-47 KT)
 SCS: SEVERE CYCLONIC STORM (48-63KT)
 VSCS: VERY SEVERE CYCLONIC STORM (64-89 KT)
 ESCS: EXTREMELY SEVERE CYCLONIC STORM (90-119 KT)
 SuCS: SUPER CYCLONIC STORM (\geq 120 KT)

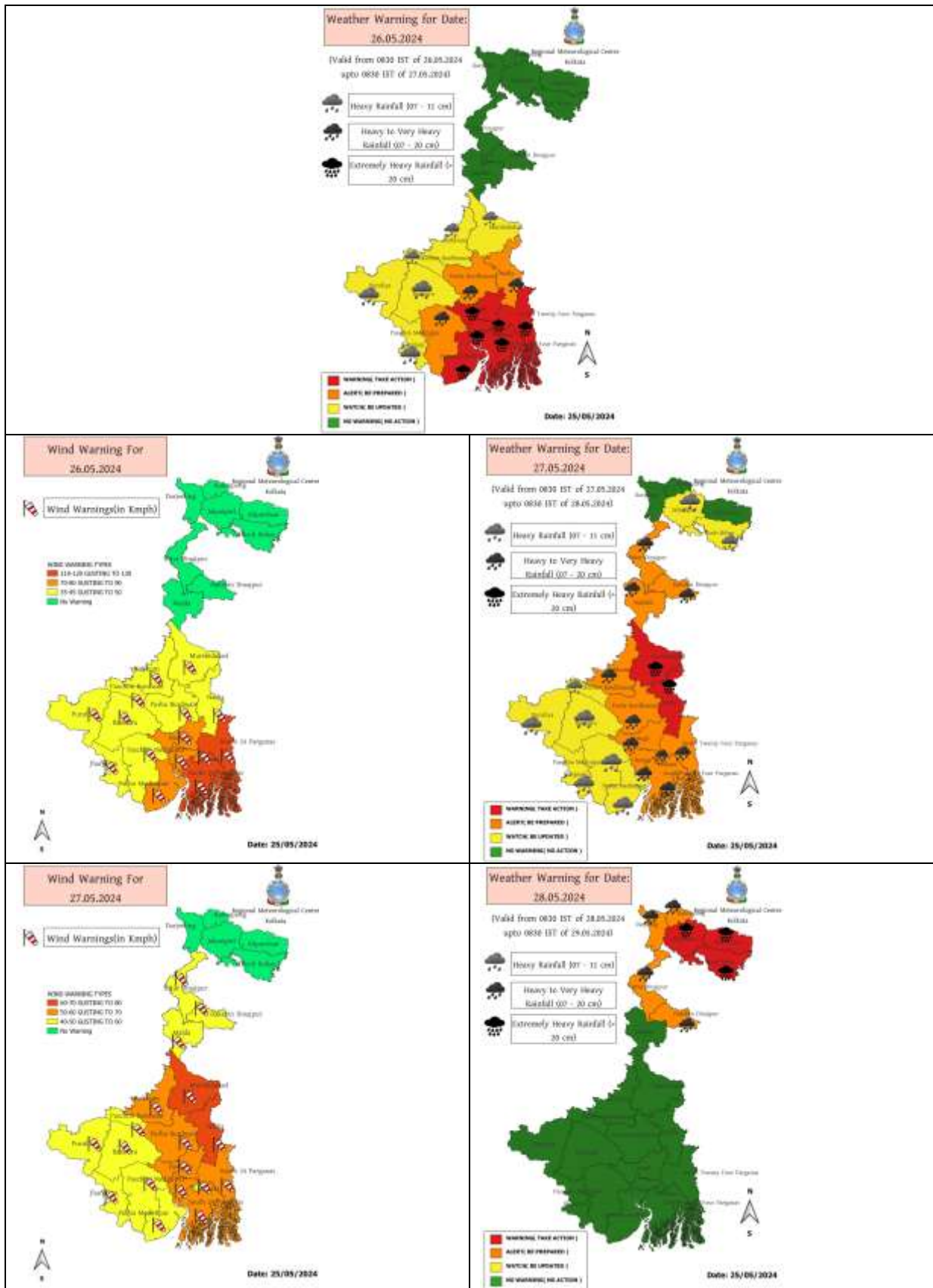
● LESS THAN 34 KT
 ○ 34-47 KT
 ● \geq 48 KT
 — OBSERVED TRACK
 — FORECAST TRACK
 — CONE OF UNCERTAINTY
 AREA OF MAXIMUM SUSTAINED WIND SPEED:
 28-33 KT (52-61 KMPH)
 34-49 KT (62-91 KMPH)
 50-63 KT (92-117 KMPH)
 \geq 64 KT (\geq 118 KMPH)

IMPACT OVER THE SEA

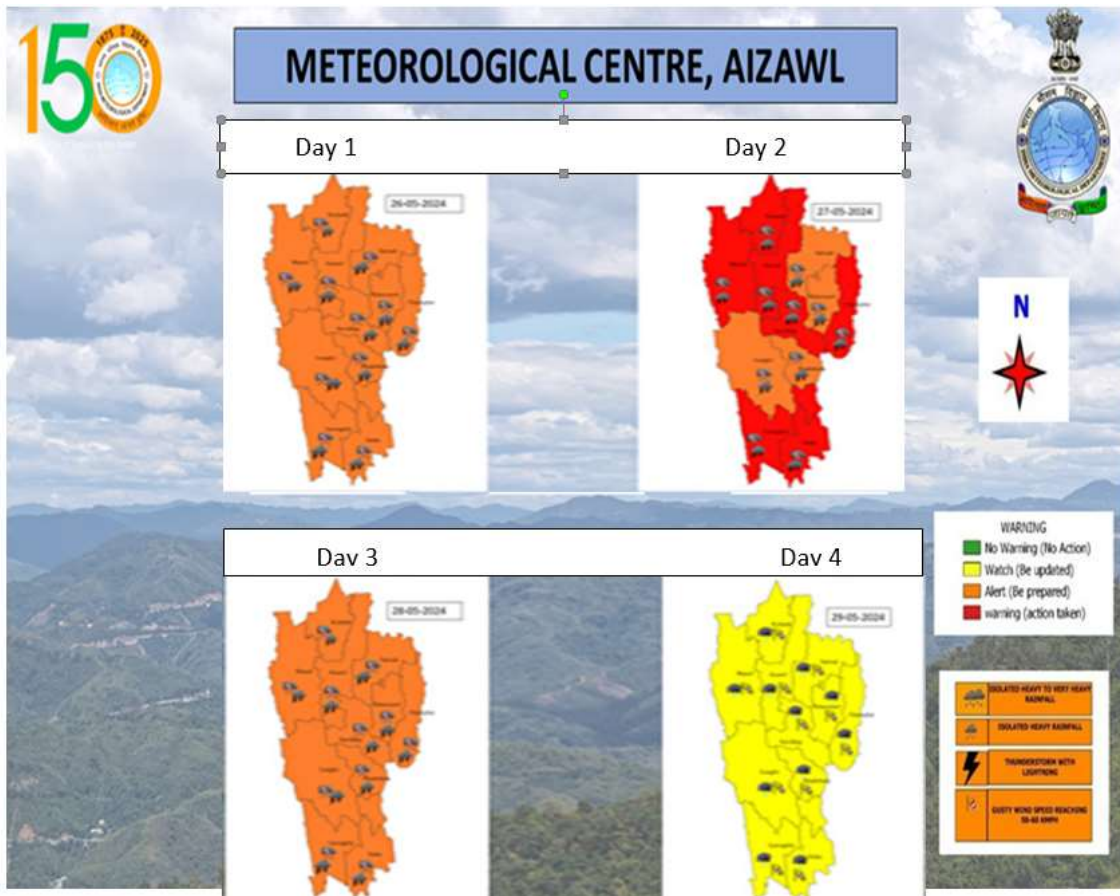
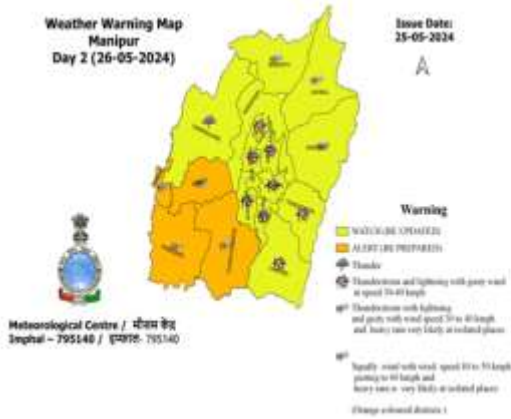
MSW (knot/kmph)	Impact	Action
28-33 (52-61)	Very rough seas	Total suspension of fishing operations
34-49 (62-91)	High to very high seas	Total suspension of fishing operations
50-63 (92-117)	Very high seas	Total suspension of fishing operations
\geq 64 (\geq 118)	Phenomenal	Total suspension of fishing operations

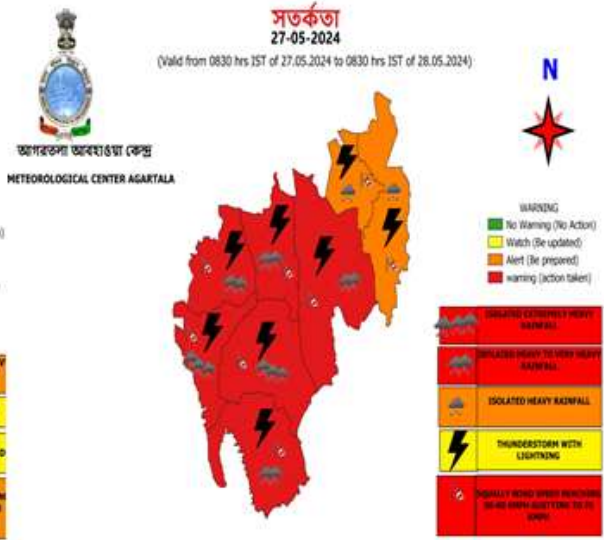


Districtwise Warning Graphics of West Bengal



Warning Graphics of Northeastern States of India





DISTRICT LEVEL WIND WARNING : ASSAM

Day 2 (26-05-2024)
Issue Date: 25-05-2024



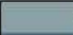
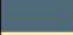




DISTRICT LEVEL WIND WARNING : ASSAM

Day 3 (27-05-2024)
Issue Date: 25-05-2024



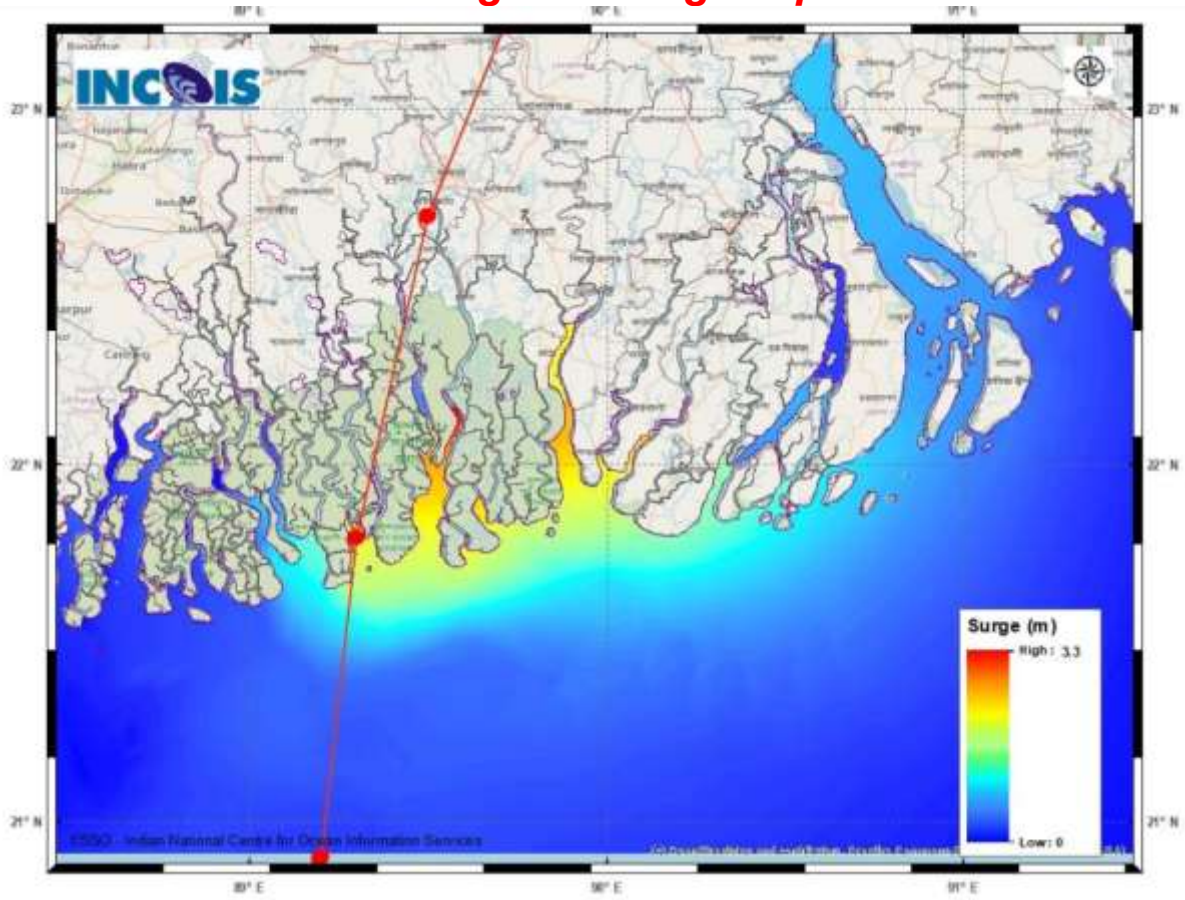
Fishermen Warning Graphics



	Squally WX with wind speed 35-45 kmph gusting to 55 kmph
	Squally WX with wind speed 45-55 kmph gusting to 65 kmph
	Squally wind with speed 45-55 kmph gusting to 65 kmph
	Squally wind with speed 50-60 kmph gusting to 70 kmph
	CS with Gale wind speed 60-90 kmph gusting to 110 kmph
	SCS with Gale wind speed 90-120 kmph gusting to 135 kmph

Fishermen are advised not to venture into the marked areas.

Storm Surge Warning Graphics

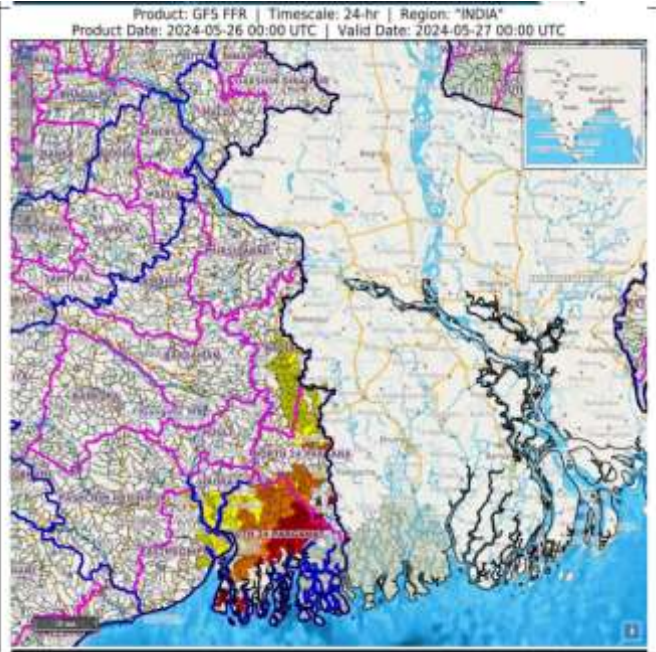


Flash Flood Guidance for West Bengal

24 hours Outlook for the Flash Flood Risk (FFR) till 0530 IST of 27-05-2024 :

Moderate flash flood risk likely over few watersheds & neighbourhoods of **southern districts of Gangetic West Bengal** Met Sub-divisions (as indicated in adjacent map) during next 24 hours.

Surface runoff/ Inundation may occur at some fully saturated soils & low-lying areas over AoC as shown in map due to expected cyclonic system Remal in next 24 hours.



Flash Flood Threat	Flash Flood Risk
 High Threat (Take Action)	 High Risk (Take Action)
 Moderate threat (Be Prepared)	 Moderate Risk (Be Prepared)
 Low Threat (Be Updated)	 Low Risk (Be Updated)

Wind & Flood Hazard Maps of West Bengal

